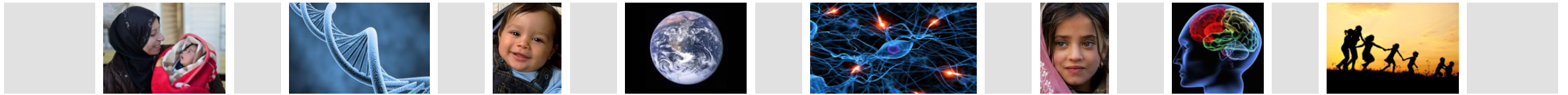


The Impact of Homelessness on Child and Human Development

An Urgent Call to Action

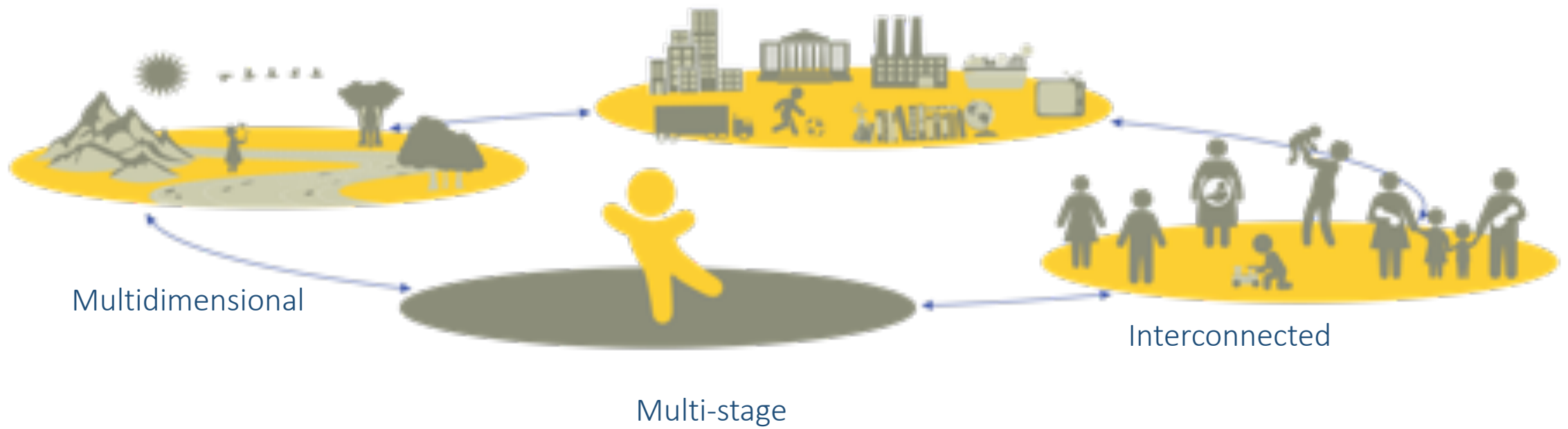


L. Angelica Ponguta, MPH, PhD
Yale University • Jacobs Foundation

58th Session of the UN Commission on Social Development
Single Mother's Vulnerability to Homelessness and its Impact on Children

New York, USA • February 2020

What is Early Childhood Development: Multidimensional, Interconnected, and Multi-stage



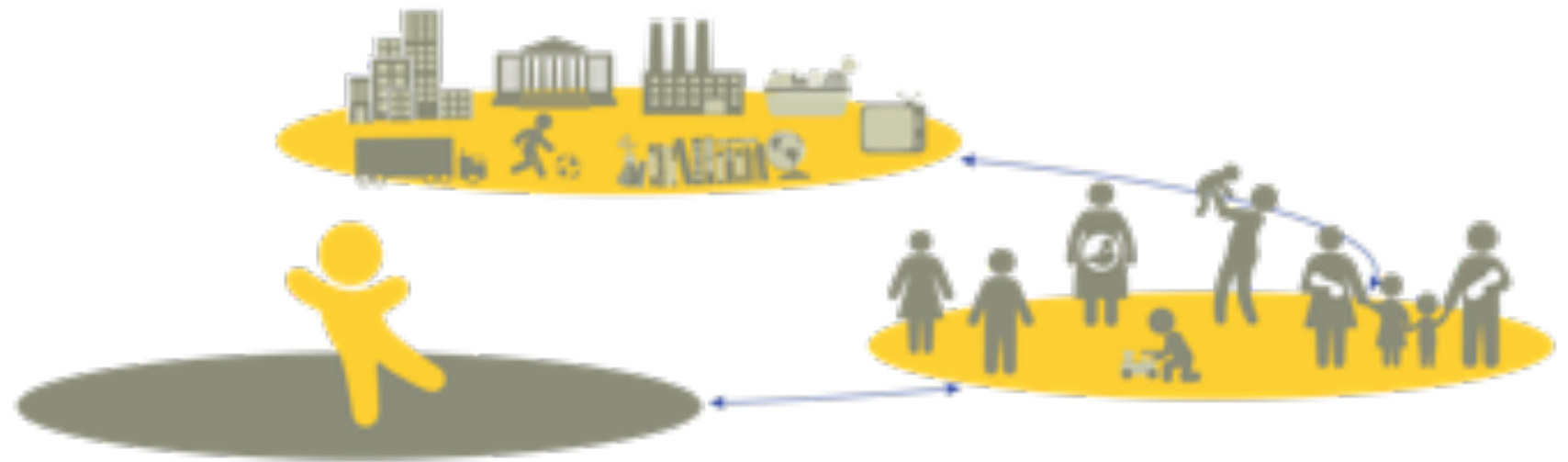
What is Early Childhood Development: Multidimensional



What is Early Childhood Development: Multidimensional



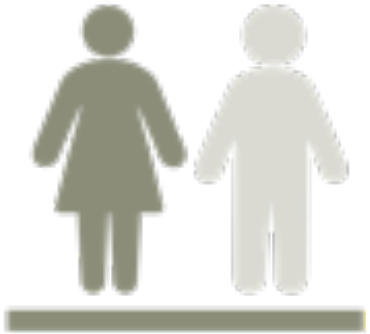
What is Early Childhood Development: Multidimensional



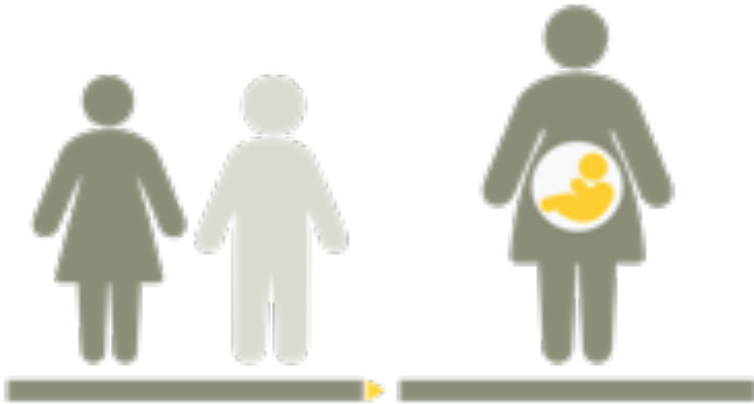
What is Early Childhood Development: Multidimensional, Interconnected



The life-course perspective and the multi-stage concept



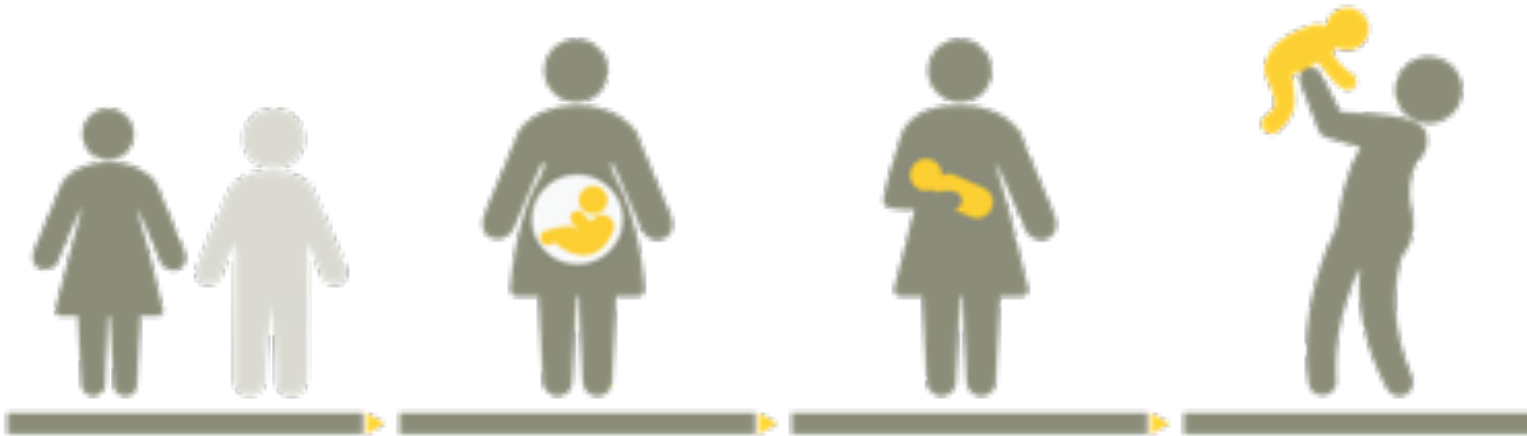
The life-course perspective and the multi-stage concept



The life-course perspective and the multi-stage concept



The life-course perspective and the multi-stage concept



The life-course perspective and the multi-stage concept



The life-course perspective and the multi-stage concept



What is Early Childhood Development: Multidimensional, Interconnected, and Multi-stage



Multi-dimensional

Interconnected

Multi-stage

Nurturing Care: Security and safety



Nurturing Care: Opportunities for early learning



Nurturing Care: Good health

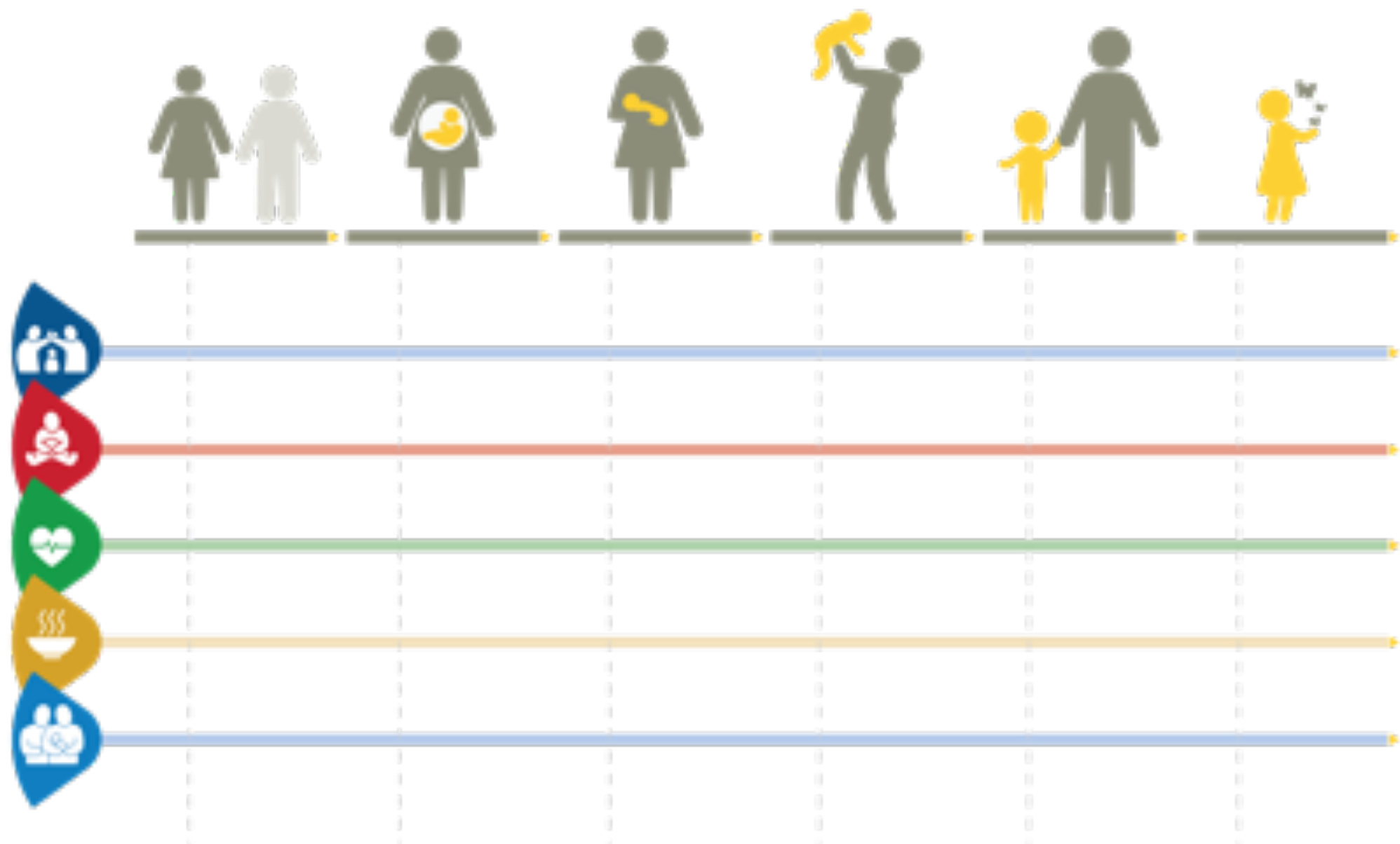


Nurturing Care: Adequate nutrition

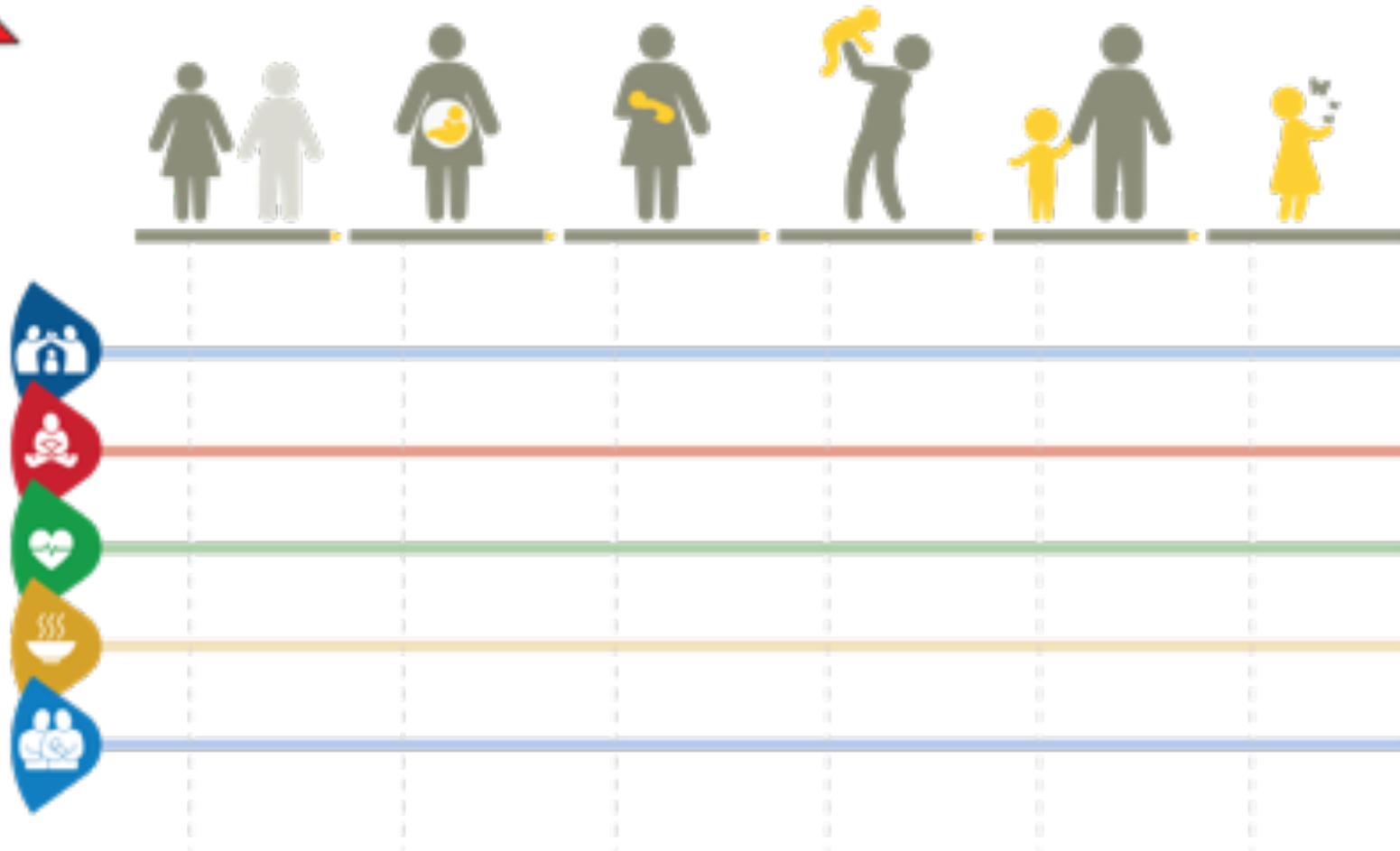


Nurturing Care: Responsive care





Why ECD Matters: A Tale of Two Lives



Scenario 1: A Life of Risk



Poverty



Toxic Stress



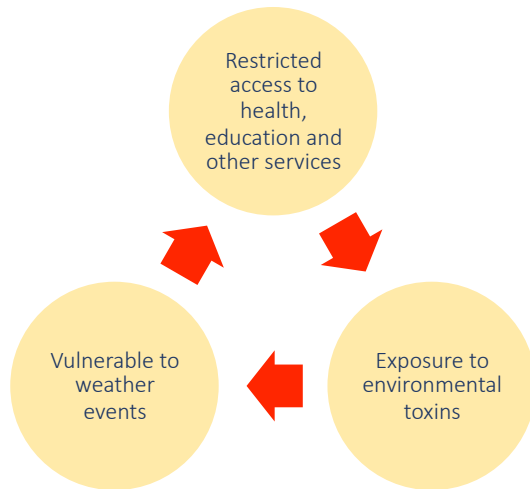
Poverty: Restricted access to health



Poverty



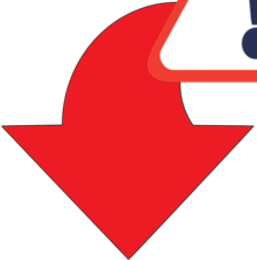
Toxic Stress



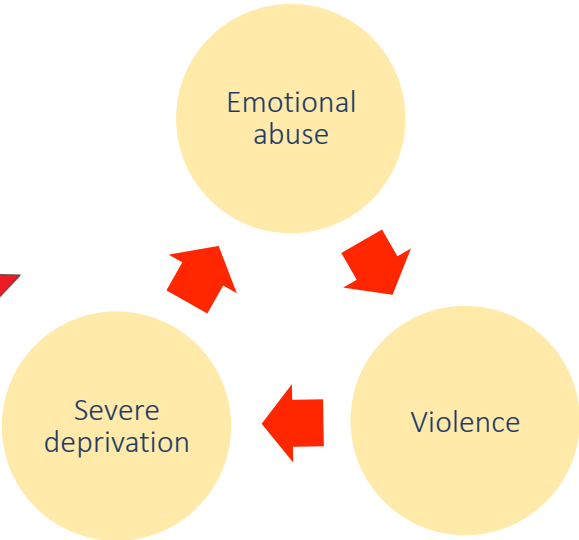
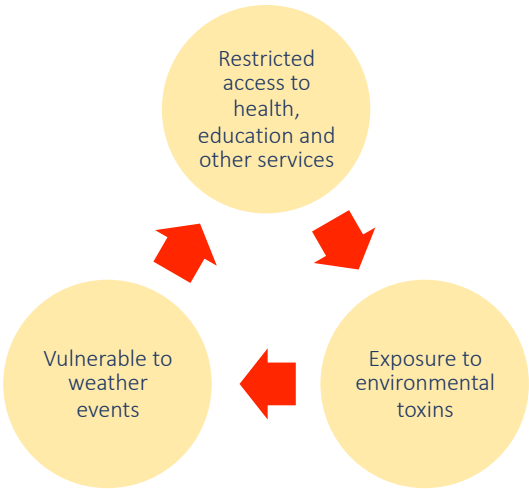
Toxic stress:
prolonged adversity



Poverty



Toxic Stress



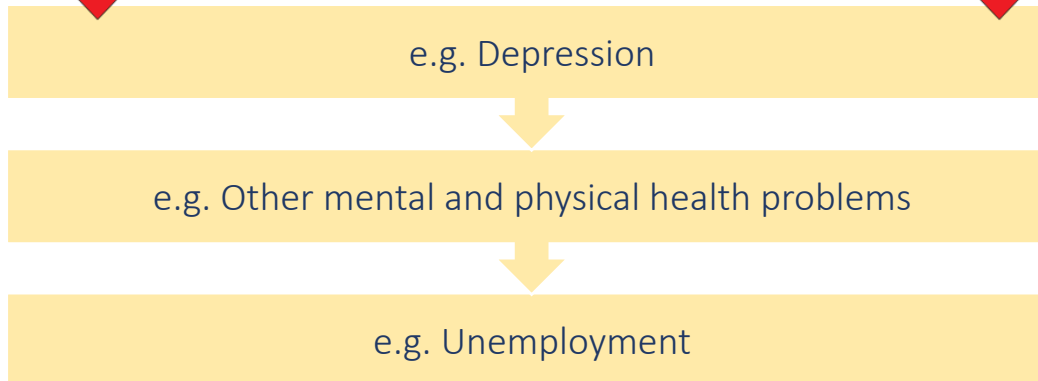
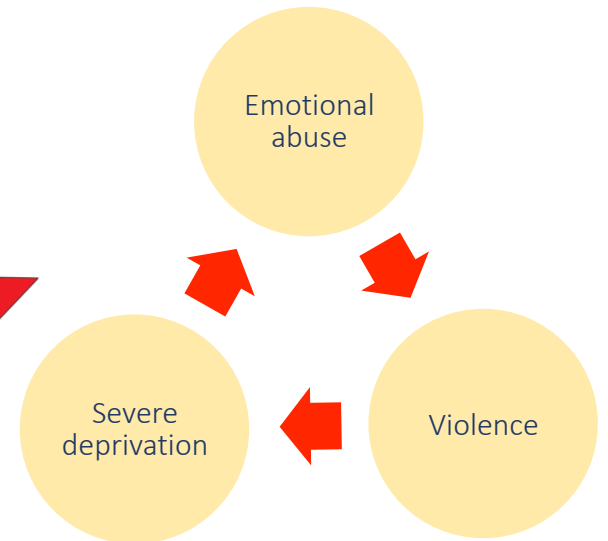
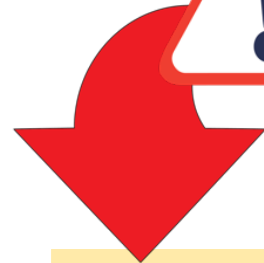
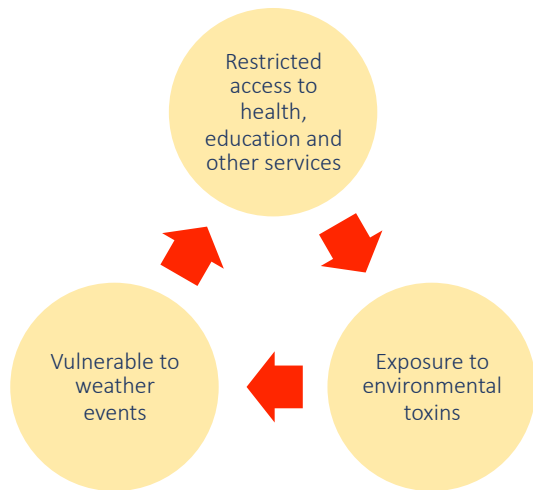
Impacts of cumulative risks

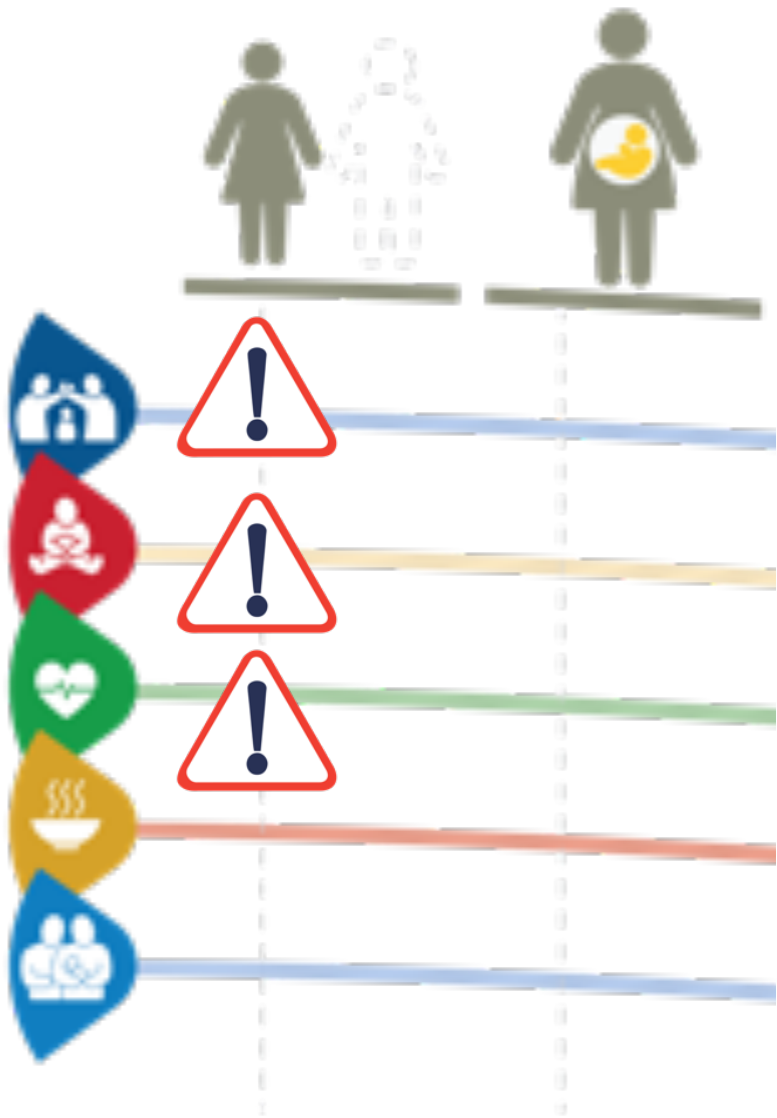


Poverty

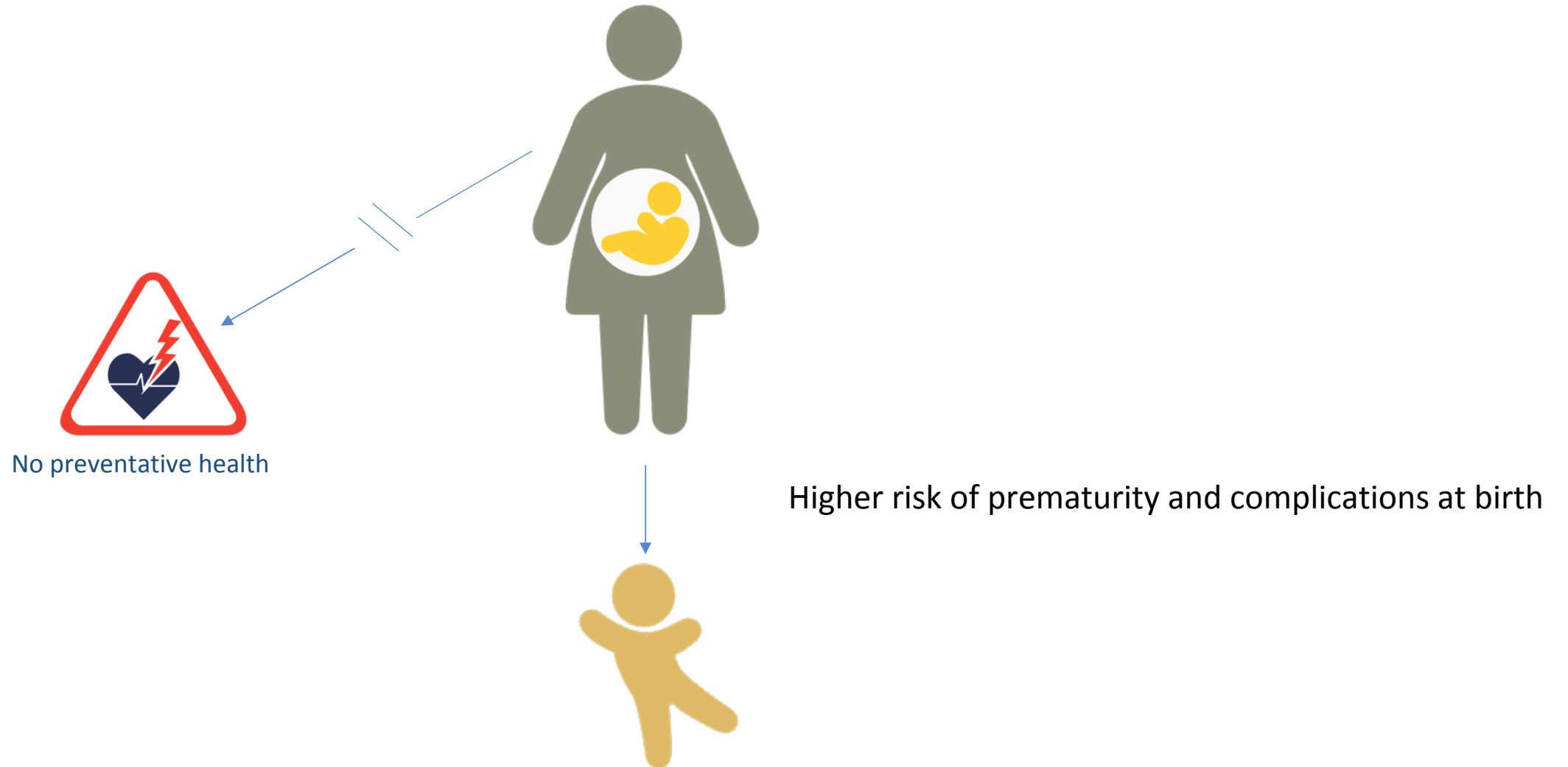


Toxic Stress

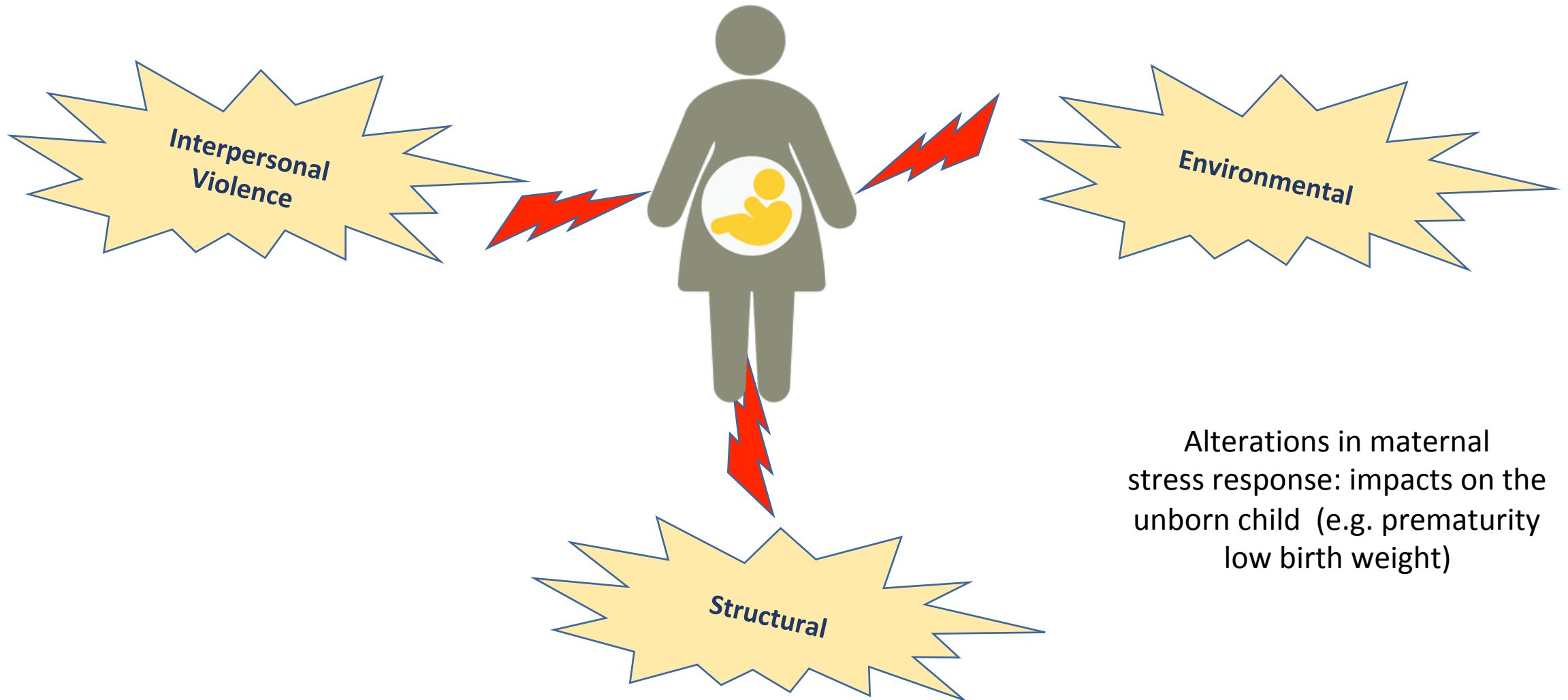




Impacts of limited access to antenatal, prenatal and maternal health

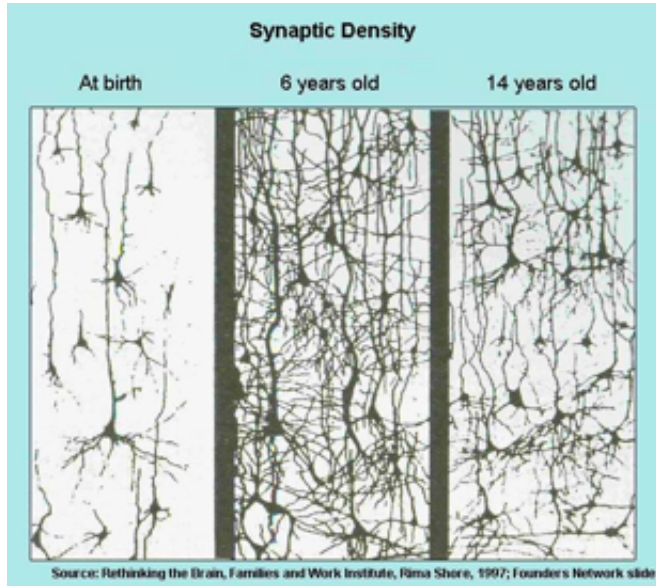


The prenatal and transgenerational impacts of toxic stress



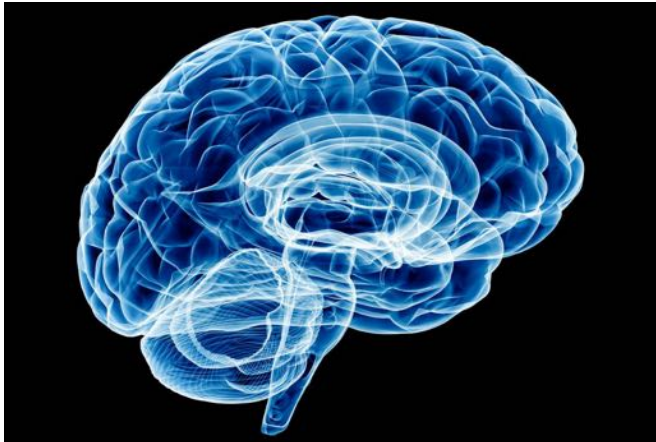


Neuronal connections are formed at the fastest speed during the early years



Two of the elements **needed** for **efficient** connections to form:

- Responsive interactions
- Nutrients/food



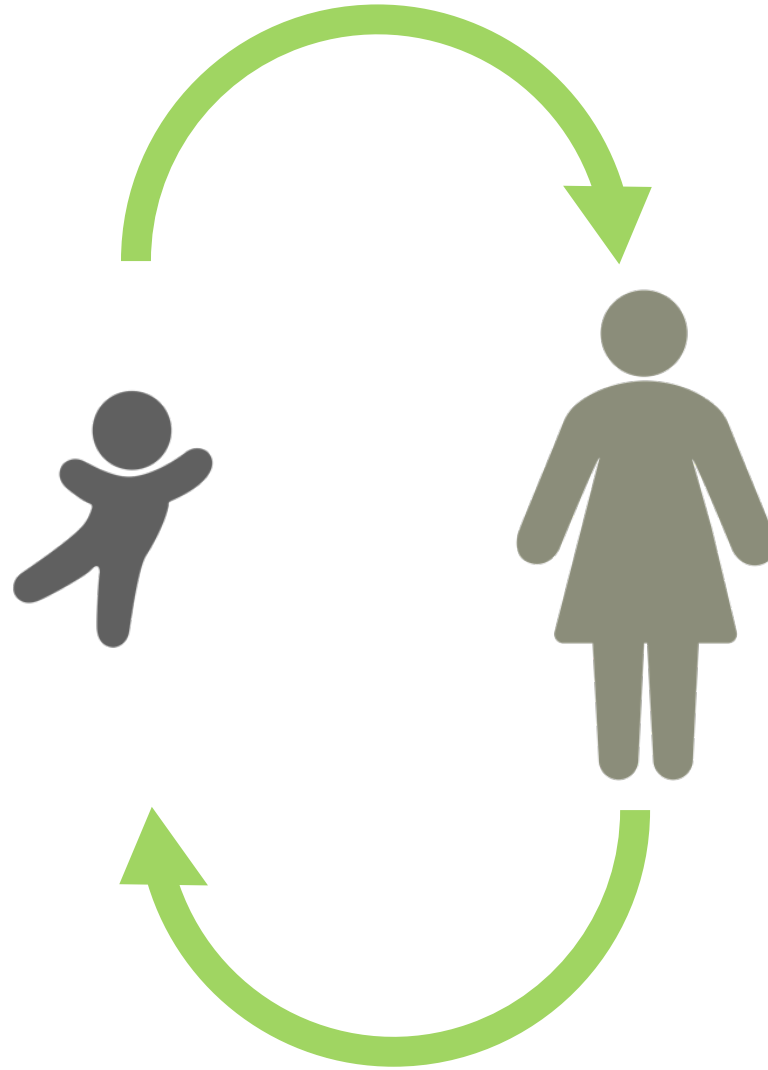
“Serve and return” and responsive interactions



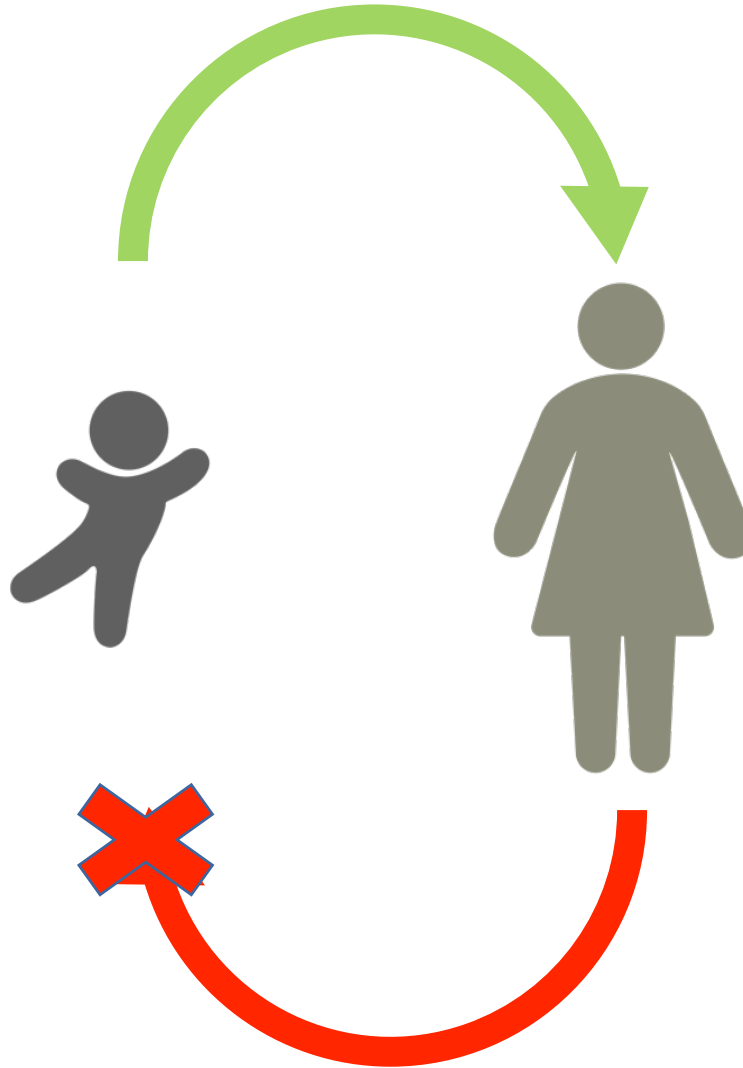
“Serve and return” and responsive interactions



“Serve and return” and responsive interactions



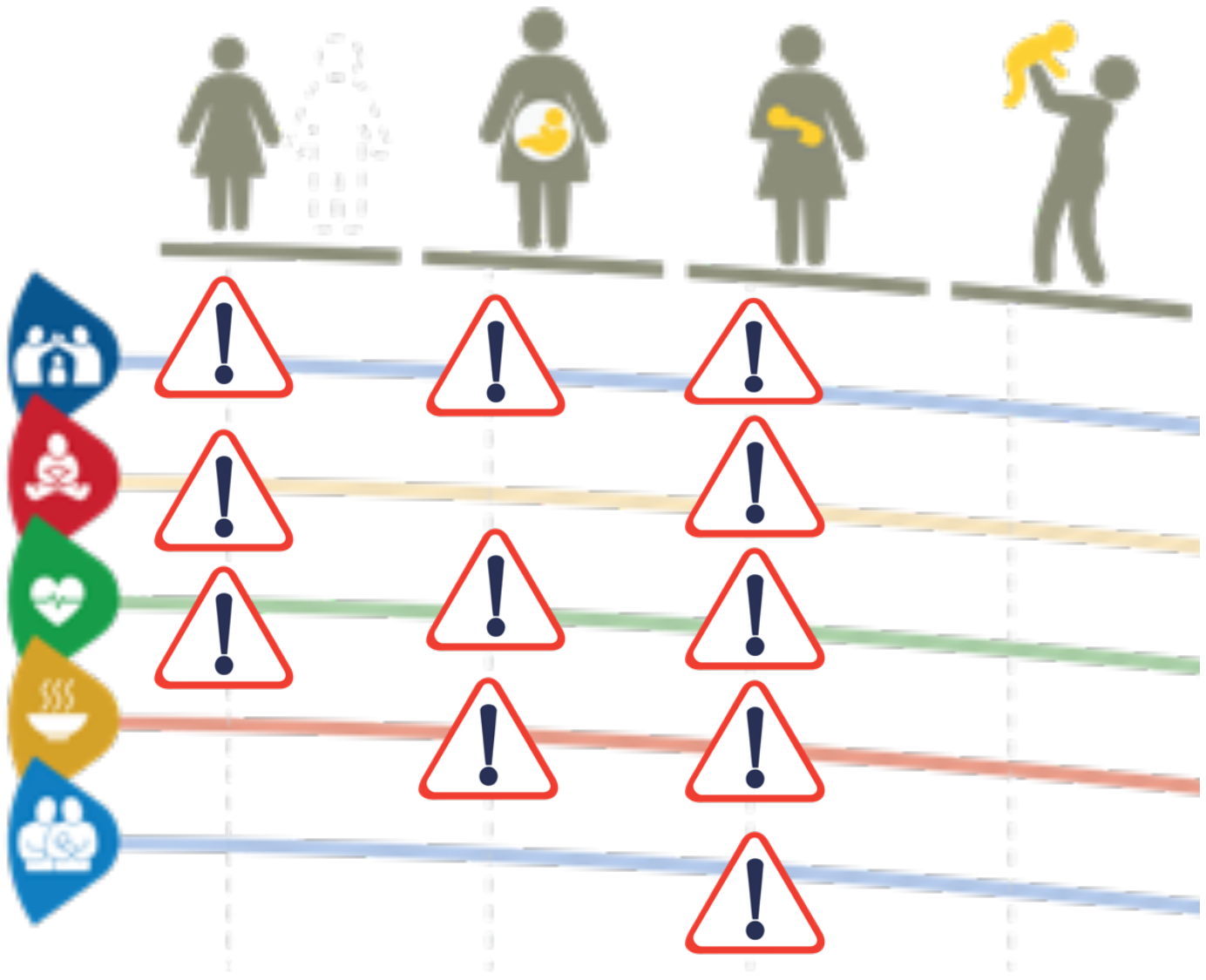
The indirect and long-lasting impacts of poor maternal well-being



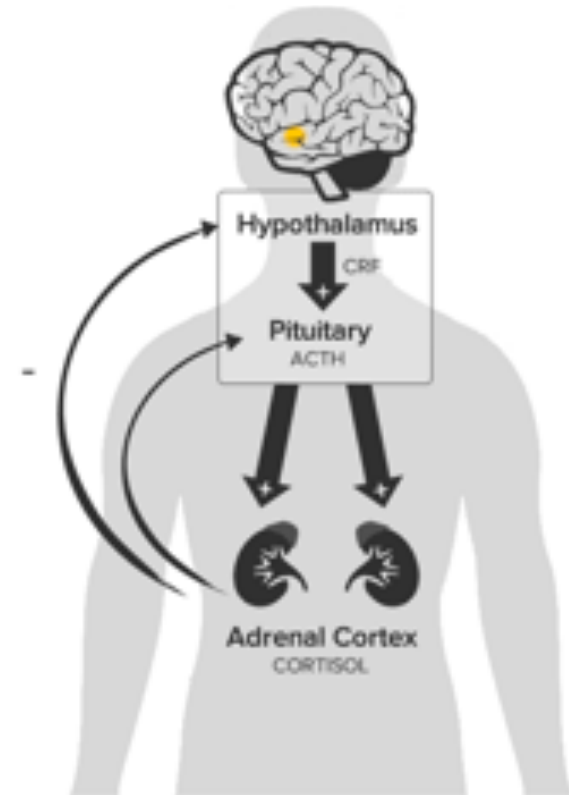
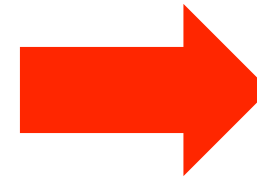
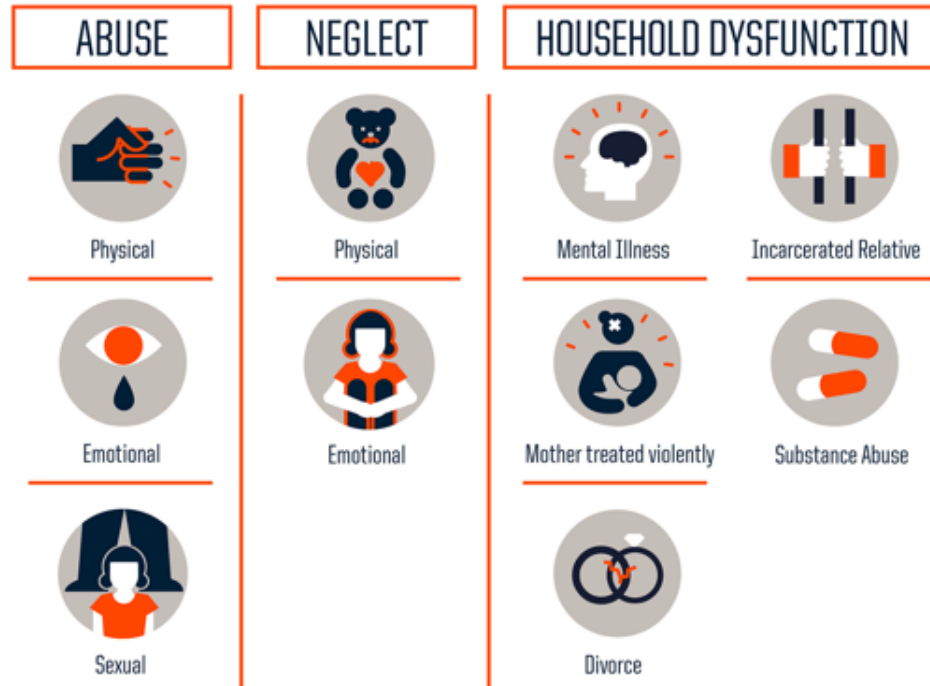
The indirect and long-lasting impacts of poor maternal well-being



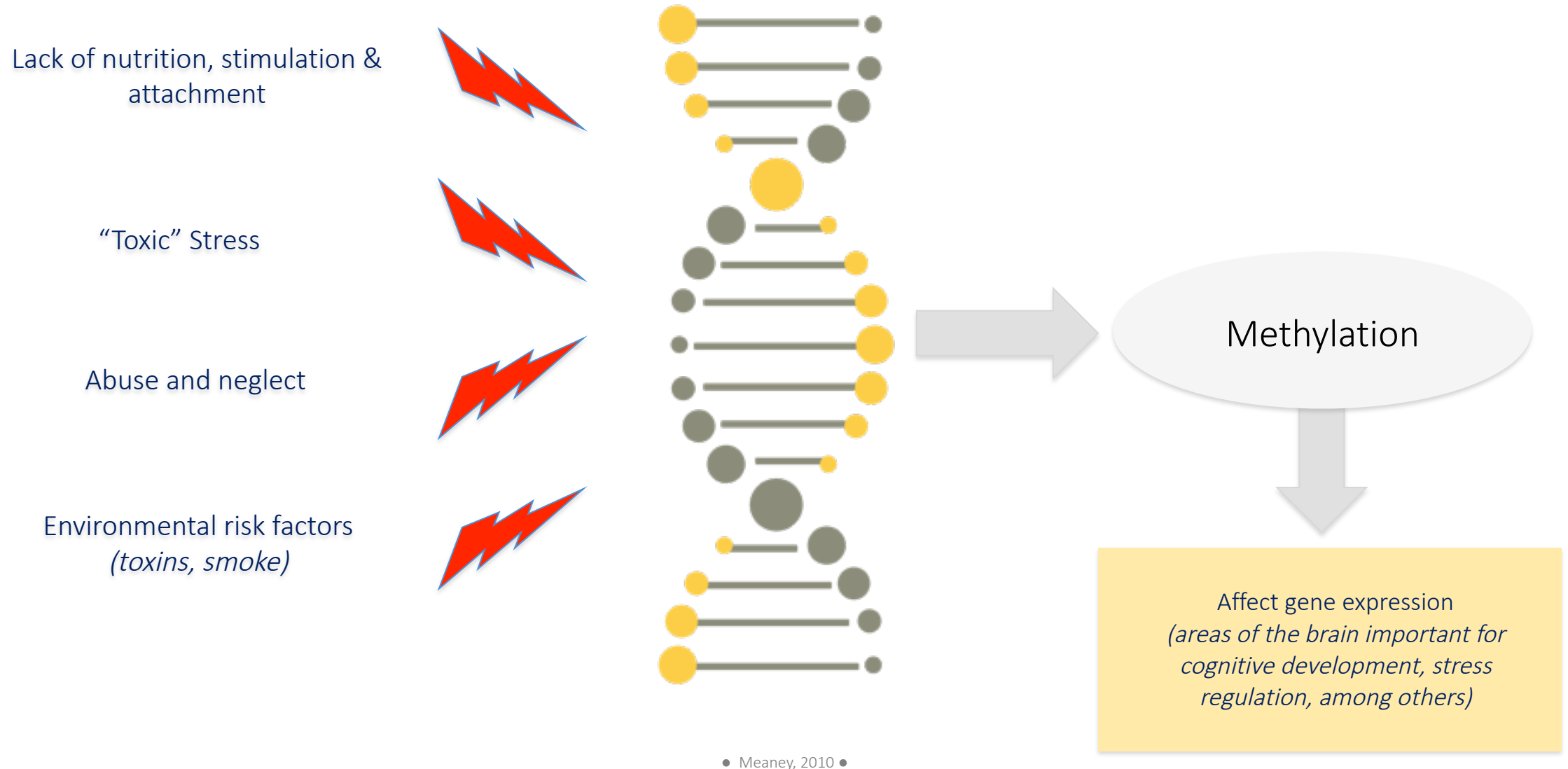
Children living in poverty have heard 30 million fewer words than their more affluent peers by the time they turn age 3



Adverse Childhood Experience



How can this happen? Epigenetic mechanisms





No access to quality early childhood education or a nurturing/stimulating environment

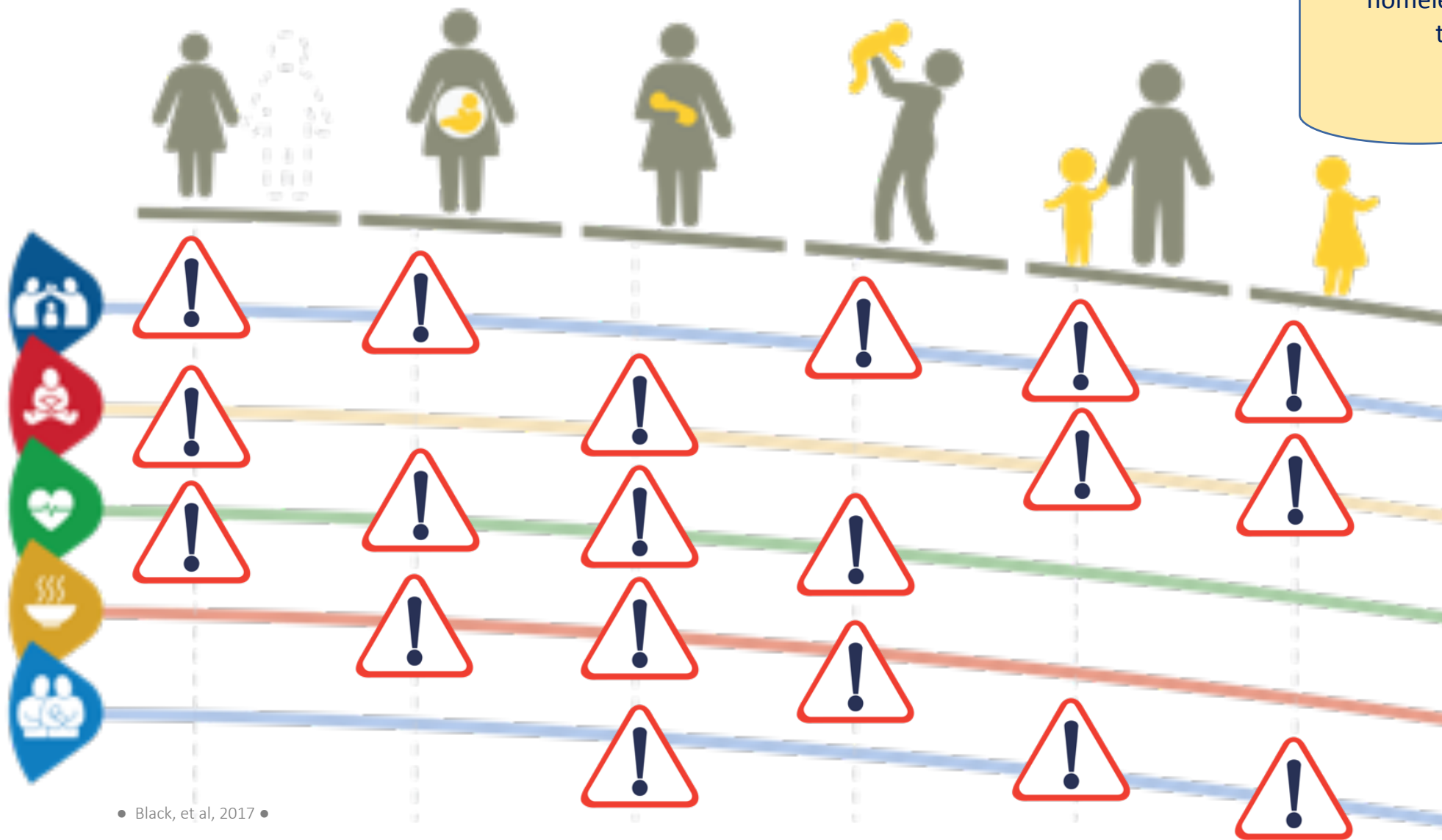


Impacts of no access to quality early childhood education or a nurturing/stimulating environment

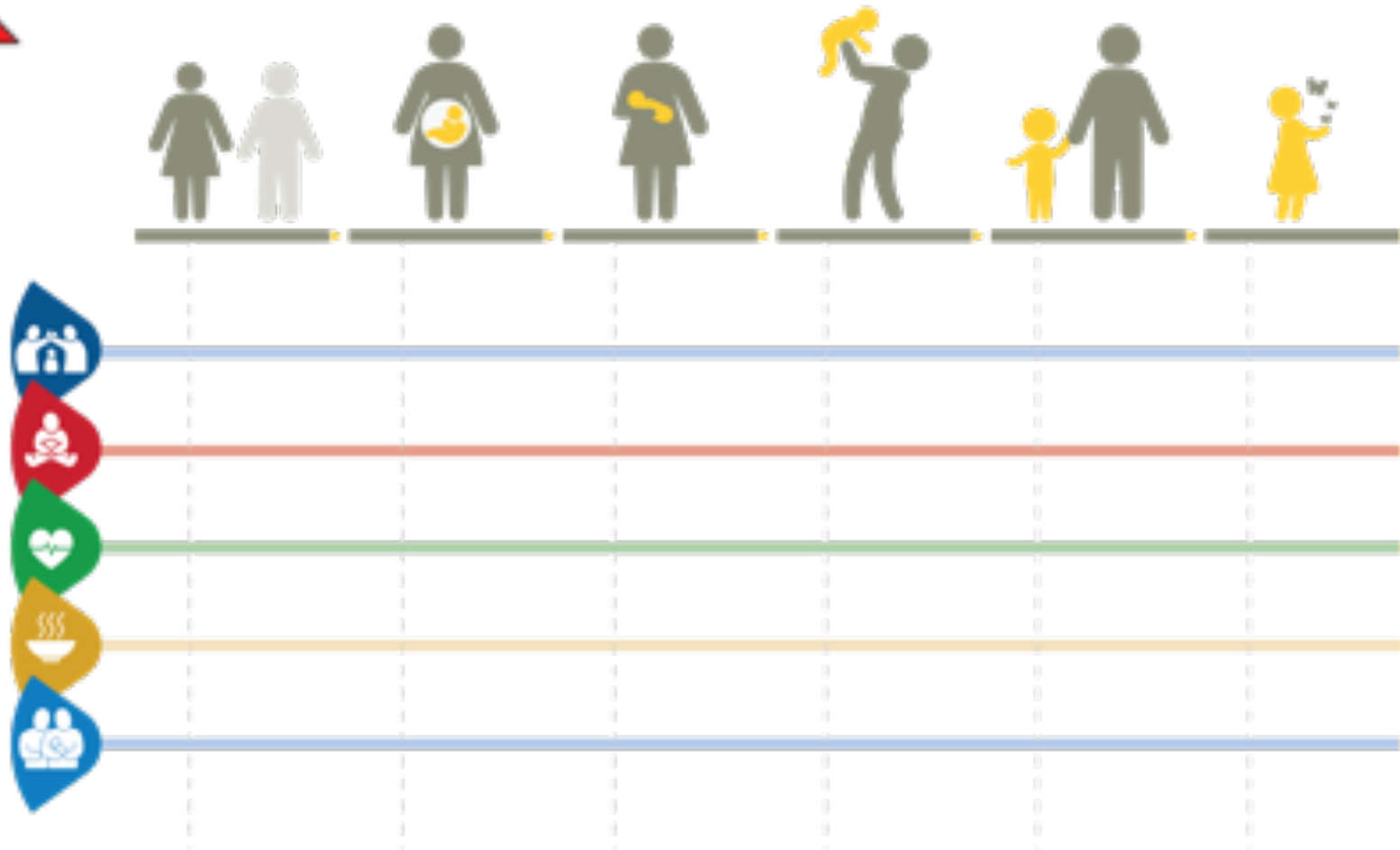


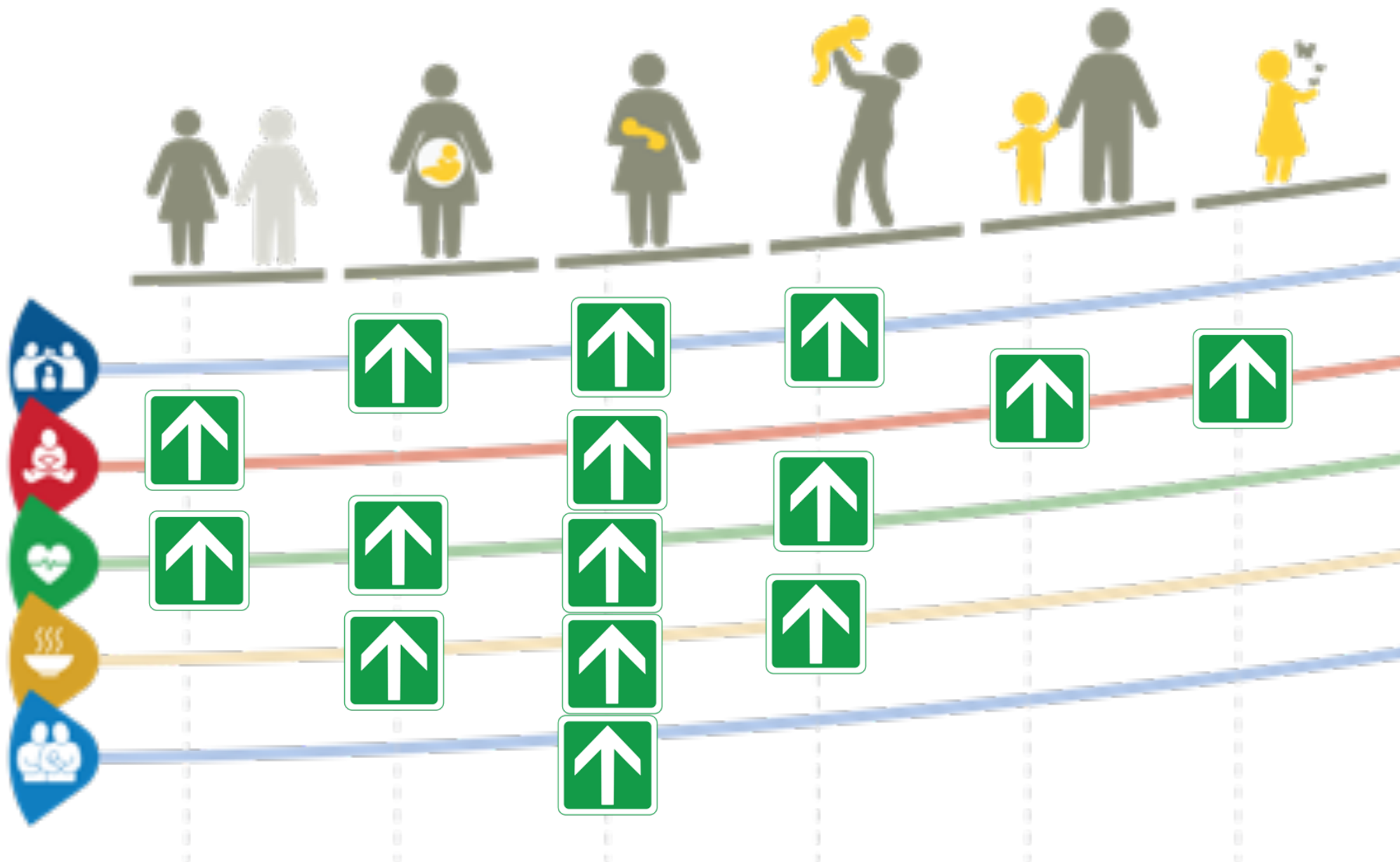
- Higher chance of either **repeating** or **dropping out** of school
- **Lower school achievement** and commitment in early adolescence
- Higher chance of engaging in **risky behaviors** that can lead to incarceration
- Greater chance of **dependence on welfare** assistance as an adult
- Likely to have **less future earnings**

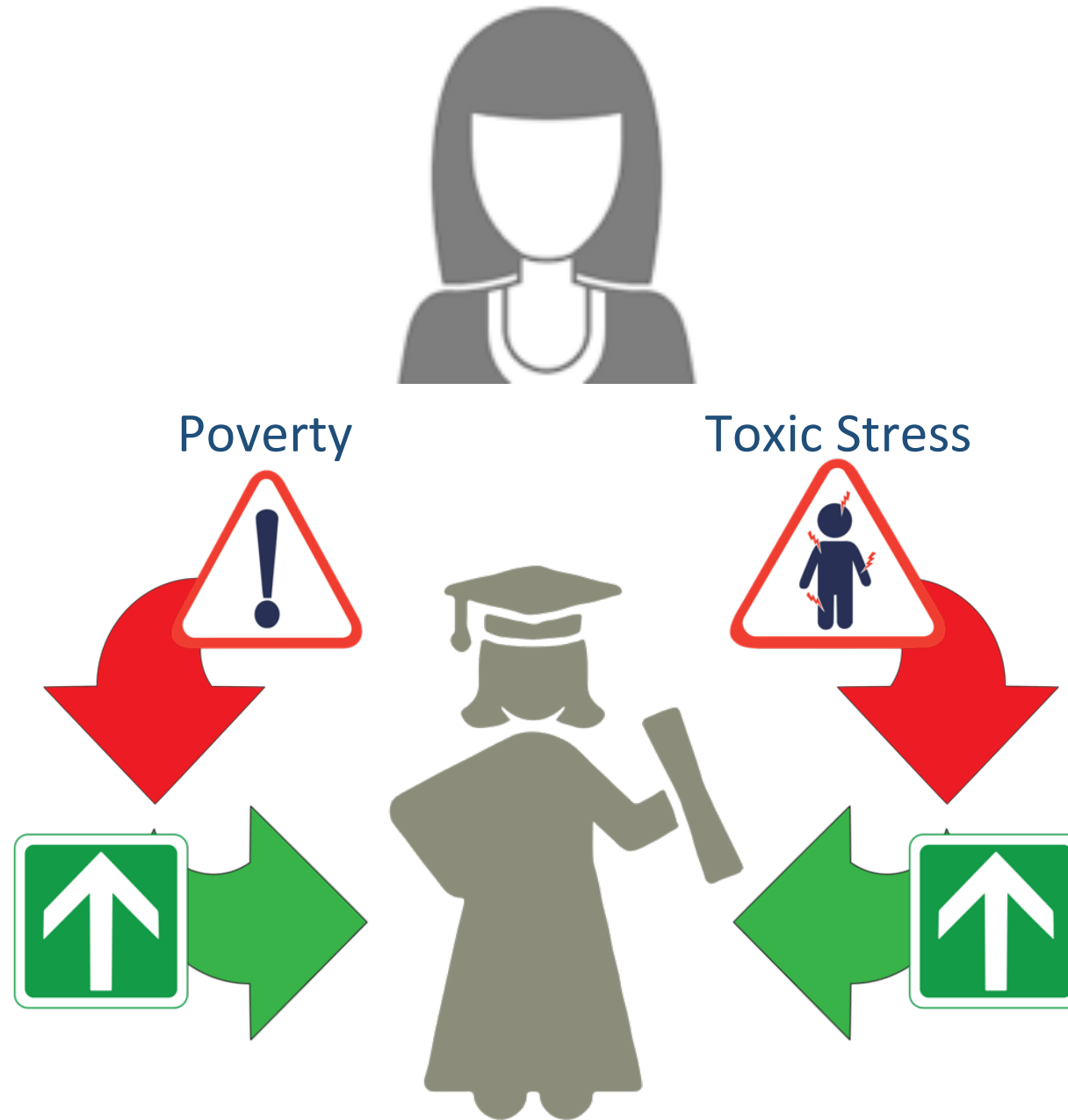
The societal cost of maternal homelessness is immense and transgenerational

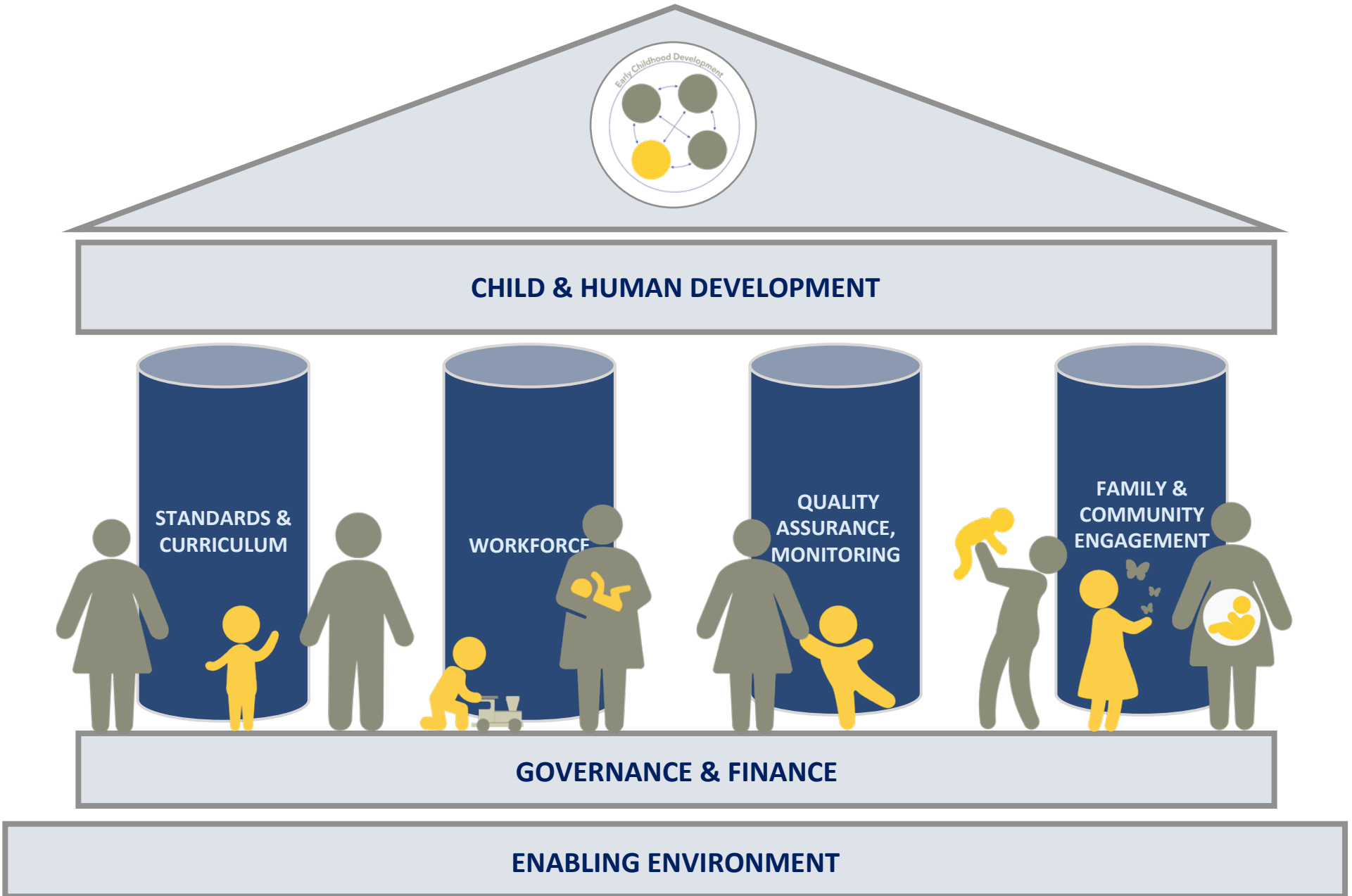


Why ECD Matters: A Tale of Two Lives



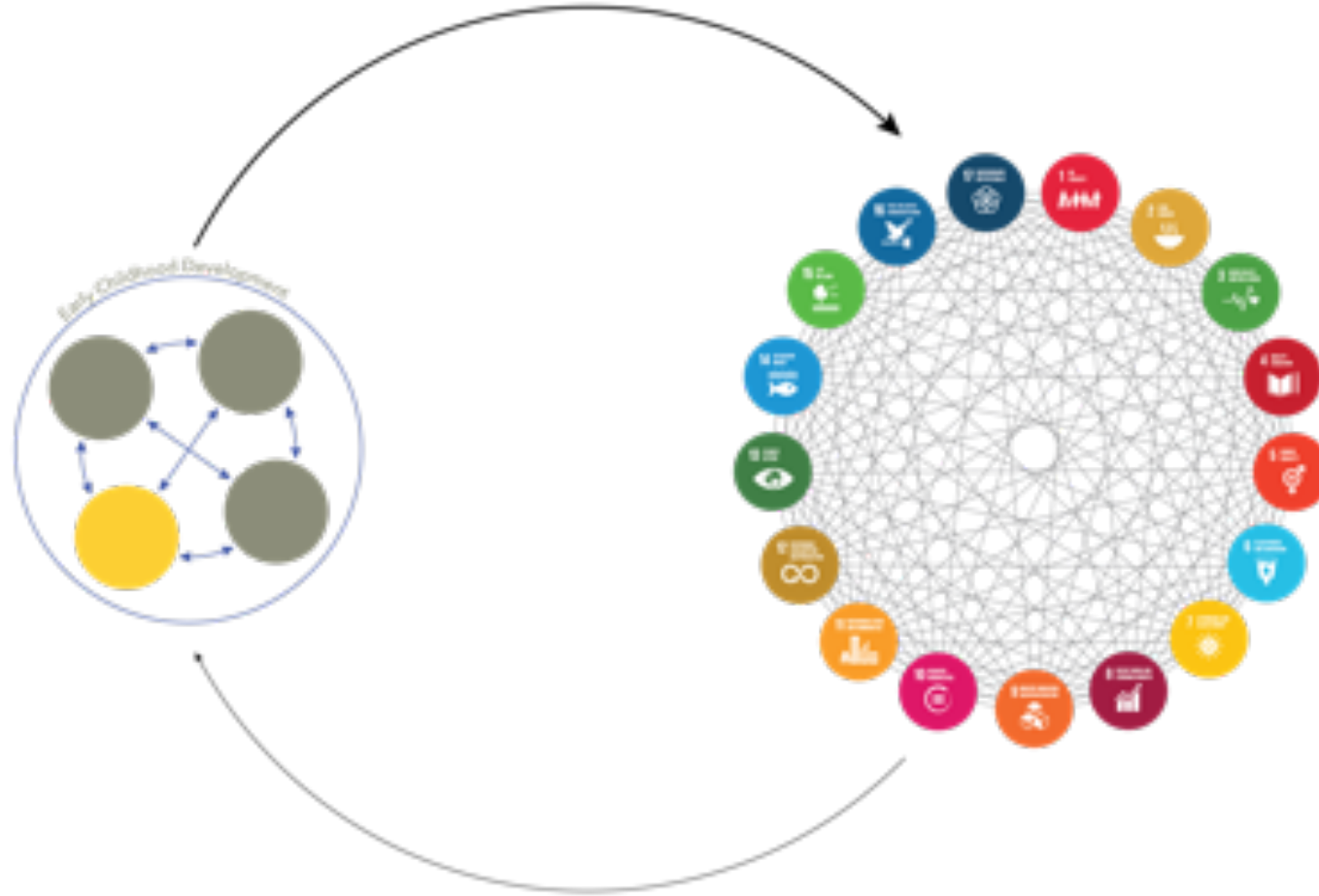






The Sustainable Development Goals

Target 4.2:
Ensure that by 2030 all girls and boys have access to quality early childhood development, care and pre-primary education so that they are ready for primary education.



16 PEACE, JUSTICE AND STRONG INSTITUTIONS





Early Childhood Peace Consortium

BE INFORMED • GET INVOLVED • BUILD PEACE






Subscribe to ECPC

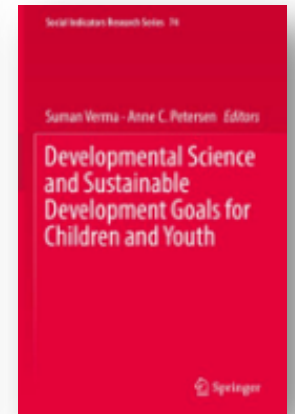
[Work Areas ▾](#)
[Global Programs ▾](#)
[News | Events ▾](#)
[Resource Library ▾](#)
[About Us ▾](#)
[Community](#)



Paper | Early childhood development services promote sustainable peace & development

Read the new ECPC background paper that exemplifies the role of early childhood development in supporting the achievement of the SDGs, in particular, Goal 16.

[Read more...](#)



www.ecdpeace.org



Acknowledgements

- Pia Britto, PhD (UNICEF)
- James Leckman, PhD (Yale University Child Study Center)
- Adrian Cerezo, PhD (Visual Analytics)