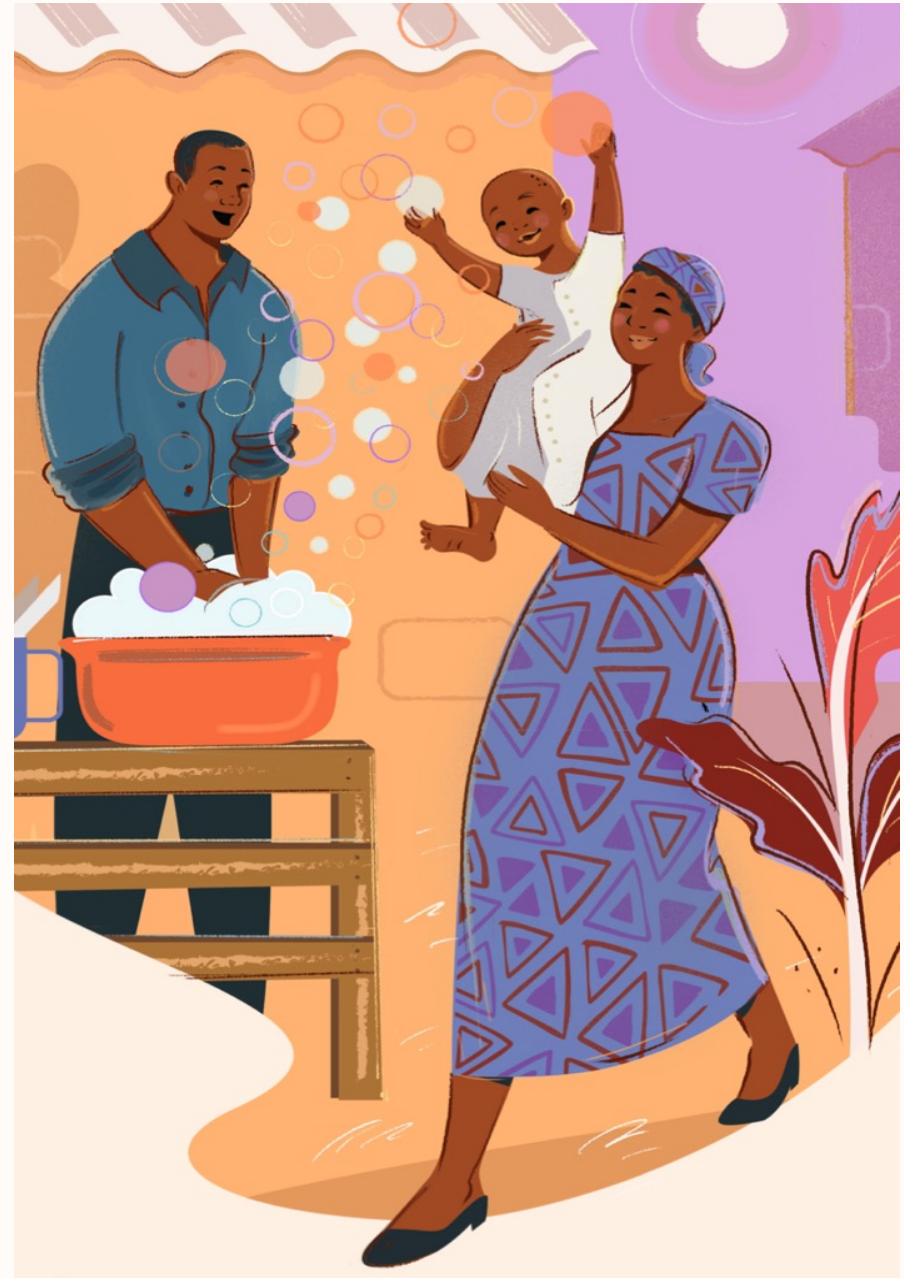




# **Bandebereho: engaging men in MNCH to transform gender norms in Rwanda**



# Bandebereho, «role model»

**Bandebereho is a gender transformative couples' intervention, which engages men in MNCH.**

It targets parents of children under 5 years old.

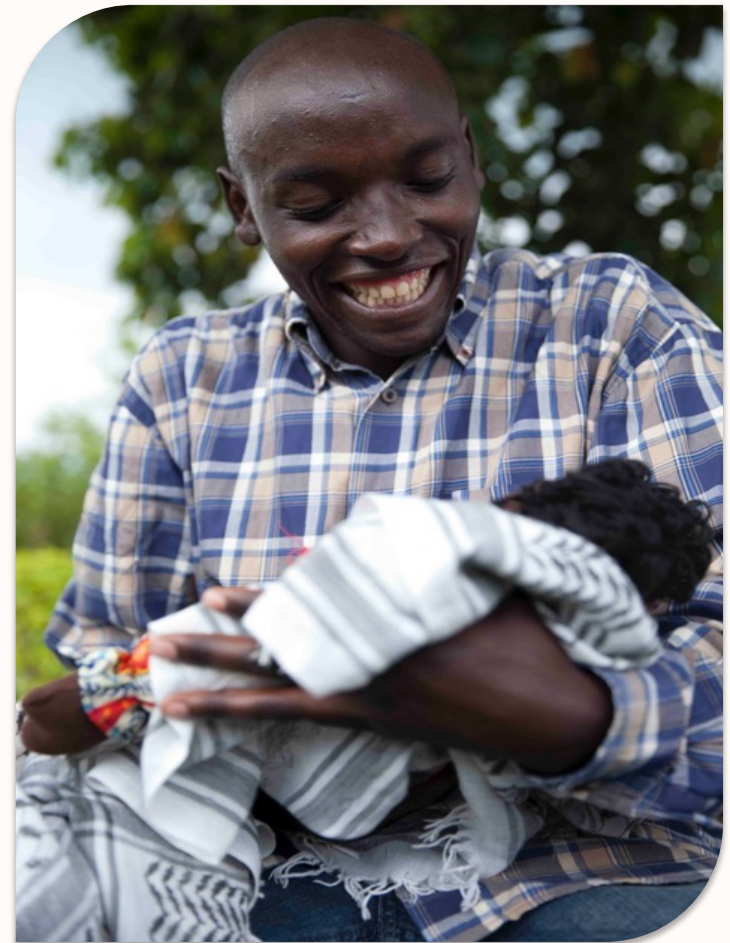
Fatherhood as entry-point to engage men in:

*Reproductive, maternal, newborn, and child health*

*Preventing violence against women & children*

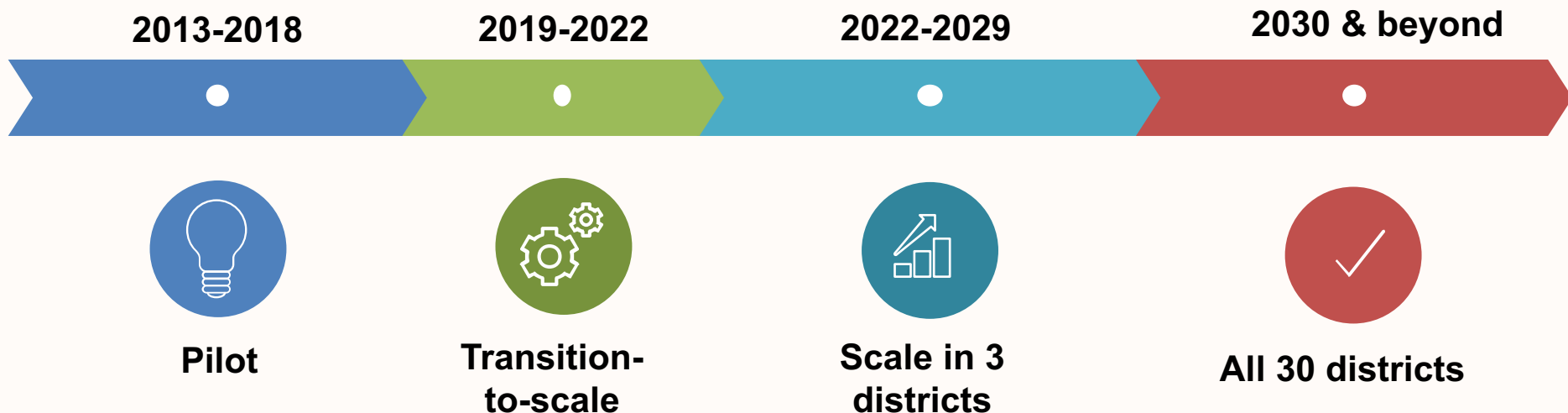
*Caregiving*

*Healthier couple relations*



# Where are we at?

Implemented in Rwanda by RWAMREC in partnership with the Rwanda Biomedical centre and the Ministry of Gender and Family Promotion, it is currently at the scale-up phase .



# Key Impacts: 21 months and 6 years after

## Partner violence

Less intimate partner violence by men



## Maternal health

Increased ANC attendance, male accompaniment & support



## Family planning

Increased use of contraceptives & FP communication



## Caregiving

Increased participation of men in childcare & household tasks



## Couple relations

Increased equitable decision-making, closer relationships



## Parenting

Reduced violence against children; more time by parents in responsive care



# Bandebereho reduces intimate partner violence

**PHYSICAL  
VIOLENCE**

↓ **35%**

**SEXUAL  
VIOLENCE**

↓ **33%**

**ECONOMIC  
VIOLENCE**

↓ **28%**

**MODERATE OR SEVERE  
EMOTIONAL VIOLENCE**

↓ **43%**

Six years later....

Compared to non-participants, Bandebereho women report **lower rates of all four forms of IPV.**